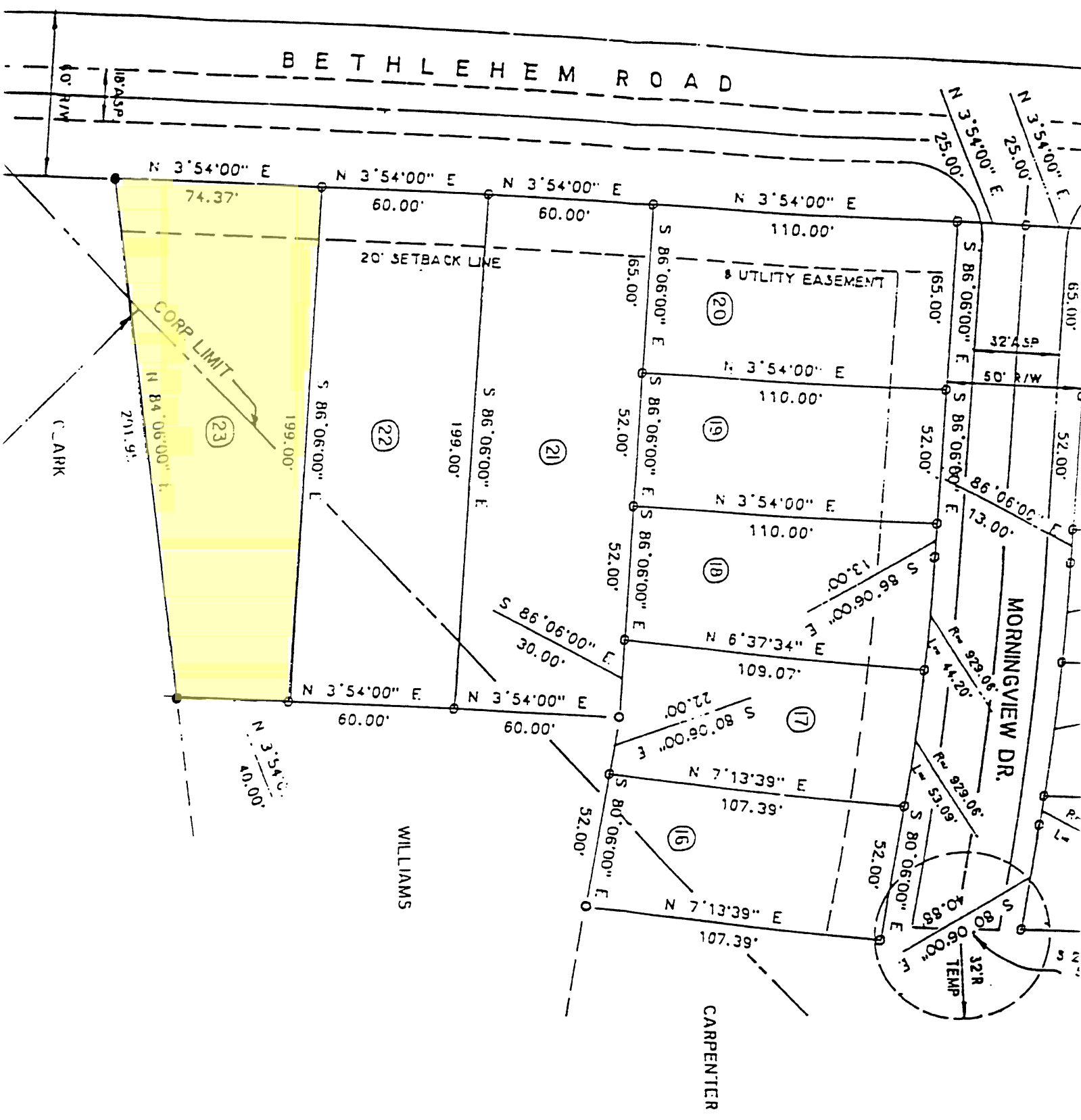


BETHLEHEM ROAD



N 3°54'00" E
74.37'

CORP LIMIT

291.9'

N 84°06'00" E

(23)

S 86°06'00" E
199.00'

(22)

S 86°06'00" E
199.00'

(21)

S 86°06'00" E
52.00'

(19)

N 3°54'00" E
110.00'

S 86°06'00" E
52.00'

(18)

N 3°54'00" E
110.00'

S 86°06'00" E
52.00'

N 6°37'34" E
109.07'

(17)

(16)

N 7°13'39" E
107.39'

S 80°06'00" E
52.00'

N 7°13'39" E
107.39'

CARPENTER

WILLIAMS

CLARK

UTILITY EASEMENT

20' SETBACK LINE

MORNINGVIEW DR.

N 3°54'00" E
25.00'

N 3°54'00" E
25.00'

S 86°06'00" E
165.00'

S 86°06'00" E
165.00'

N 3°54'00" E
50' R/W

S 86°06'00" E
52.00'

S 86°06'00" E
52.00'

S 86°06'00" E
13.00'

N 3°54'00" E
86°06'00" E

S 86°06'00" E
13.00'

N 6°37'34" E
109.07'

S 80°06'00" E
22.00'

N 7°13'39" E
107.39'

S 80°06'00" E
52.00'

N 7°13'39" E
107.39'

S 80°06'00" E
52.00'

N 7°13'39" E
107.39'

S 80°06'00" E
52.00'

N 7°13'39" E
107.39'

S 80°06'00" E
52.00'

N 7°13'39" E
107.39'

S 80°06'00" E
52.00'

N 7°13'39" E
107.39'

S 80°06'00" E
52.00'

N 7°13'39" E
107.39'

S 80°06'00" E
52.00'

N 7°13'39" E
107.39'

S 80°06'00" E
52.00'

N 7°13'39" E
107.39'

S 80°06'00" E
52.00'

N 7°13'39" E
107.39'

S 80°06'00" E
52.00'

N 7°13'39" E
107.39'

S 80°06'00" E
52.00'

N 7°13'39" E
107.39'

S 80°06'00" E
52.00'

TEMP

32' R

32' R

32' R

32' R

32' R

32' R

32' R

32' R

32' R

32' R

32' R

32' R

32' R

32' R

32' R

32' R

32' R

32' R

32' R

32' R

32' R

32' R

32' R

32' R

32' R

32' R

32' R

32' R

32' R

32' R

32' R

32' R

32' R

32' R

32' R

32' R

32' R

32' R

32' R

32' R

32' R

32' R

32' R

32' R

32' R

32' R

32' R

32' R

32' R

32' R

32' R

32' R

32' R

32' R

32' R

32' R

32' R

32' R

32' R

32' R

32' R

32' R

32' R

32' R

32' R

32' R

32' R

32' R

32' R

32' R

32' R

32' R

32' R

32' R

32' R

32' R

32' R

32' R

32' R

32' R

32' R

32' R

32' R

32' R

32' R

32' R

32' R

32' R

32' R

32' R

32' R

32' R

32' R

32' R

32' R

32' R

32' R

32' R

32' R

32' R

32' R

32' R

32' R

32' R

32' R

32' R

32' R

32' R

32' R

32' R

32' R

32' R

32' R

32' R

32' R

32' R

32' R

32' R

32' R

32' R

32' R

32' R

32' R

32' R

32' R

32' R

32' R

32' R

32' R

32' R

32' R

32' R

32' R

32' R

32' R

32' R

32' R

32' R

32' R

32' R

32' R

32' R

32' R

32' R

32' R

32' R

32' R

32' R

32' R

32' R

32' R

32' R

32' R

32' R

32' R

32' R

32' R

32' R

32' R

32' R

32' R

32' R

32' R

32' R

32' R

32' R

32' R

32' R

32' R

32' R

32' R

32' R

32' R

32' R

32' R

32' R

32' R

32' R

32' R

32' R

32' R

32' R

32' R

32' R

32' R

32' R

32' R

32' R

32' R

32' R

32' R

32' R

32' R

32' R

32' R

32' R

32' R

32' R

32' R

32' R

32' R

32' R

32' R

32' R

32' R

32' R

32' R

32' R

32' R

32' R

32' R

32' R

32' R

32' R

32' R

32' R

32' R

32' R

32' R

32' R

32' R

32' R

32' R

32' R

32' R

32' R

32' R

32' R

32' R

32' R

32' R

32' R

32' R

32' R

32' R

32' R

32' R

32' R

32' R

32' R

32' R

32' R

32' R

32' R